



# SAILING INSTRUCTIONS

## Boston Harbor Islands Regatta V 2009

Update August 27, 2009

### 1. RULES

1.1 The regatta will be governed by the rules as defined in The Racing Rules of Sailing (RRS) for 2009-2012 and the 2009 PHRF-NE Rating Rules as adopted and amended by the Boston Harbor Islands Regatta (BHIR) Committee in this Notice of Race & Sailing Instructions and the safety and equipment regulations of the USCG.

1.2 All contestants shall wear USCG approved PFDs when crossing the starting line. Youth aged 12 and under shall wear Personal Flotation Devices (PFDs) at all times while racing.

### 2. OTHER RULES & REQUIREMENTS

2.1 All boats shall carry an operating VHF radio and at least 2 “real” (not lifejackets) fenders for the purpose of rafting-up on available moorings or while at anchor after the race.

2.2 All boats shall be sailed by at least 2 persons.

2.4 For those entrants without a current 2009 PHRF-NE rating certificate, the BHIR Committee shall assign either a one-design class rating or a rating based upon that of sisterships or similar vessels using owner supplied information on the BHIR Rating Application form.

2.5 Boats racing with a class rating (Solings, Sonars, J/22s, J/24s, Thunderbirds, 210s etc.) shall comply with one-design class rules in terms of sails carried, sail dimensions and crew weight limitations.

2.6 Any commercial or editorial reference to this event shall use the Regatta’s name on first mention, which is “2009 Boston Harbor Islands Regatta presented by THE BEAL COMPANY.”

2.7 Event bow stickers shall be attached to both sides of the boat’s hull while racing, mounted approximately 6 inches below deck level and 12 inches aft of the bow. Boats failing to display bow stickers may be subject to protest by the race committee only.

2.8 This event has been designated a **Clean Regatta** by Sailors for the Sea ([www.sailorsforthesea.org](http://www.sailorsforthesea.org)) and we have pledged our commitment to keeping the waters of Boston Harbor and the shores of the Islands clean and free of debris during the course of, and following the close of, the race. Please help us fulfill this commitment by keeping all your trash in your boat and out of the water... leaving nothing behind other than your wake.

### 3. ELIGIBILITY AND ENTRY

3.1 The regatta is open to all sailing vessels 22 feet LOA and larger that submit a completed entry form.

3.2 Complete your “on-line” entry on [www.bostonharborislandsregatta.org](http://www.bostonharborislandsregatta.org) or fax (617-223-8671) or mail the Entry Form attached. BHIR Contact is Laurie Cormier (617-223-8326), [lcormier@islandalliance.org](mailto:lcormier@islandalliance.org)

3.3 The entry fee is \$50 if received prior to September 1 and \$75 thereafter. Entries received after September 22 will be accepted at the discretion of the Committee.

3.4 One Design classes and groups of boats wishing to receive special prizes and to race level will be scored overall and as a separate division at the discretion of the Race Committee.

3.5 Class Breaks will approximate those of 2008, but maybe revised to equalize Class sizes..

FLEET 1: Class A (Spin PHRF under 105); Class B (Spin PHRF 105-135); Class C (Spin PHRF 136+)

FLEET 2 Class D (Non-Spin PHRF Under 175); Class E (Non-Spin PHRF 175-210). Class F (Non-Spin 210+); Class G City Boat Club One Designs.

#### **4. SCHEDULE OF EVENTS**

##### **FRIDAY SEP 25 PRE-RACE MEETING & PARTY**

1800 Pre-Race Captains Meeting at the Boston Harbor Hotel Pavillion

1900 Regatta Party for all sponsors/contestants, crews and family at the Daily Catch.

##### **SATURDAY SEP 26 RACE DAY Low Tide 1139 Hrs High Tide 1758 Hrs Sunset 1834 Hrs.**

**Fleet 2 Non-Spinnaker & City Boat Club One Designs** starting at **GRC”HS”** SW of Georges Island

0900 VHF Announcements **VHF 71**

0930 Repeat VHF Announcements Channel 71

0955 Fleet 2 Classes D-G Warning Signal – One Gun

1000 Start Sequence Begins for Fleet 2 (Classes D-F) with start of 1<sup>st</sup> boat – One Gun

1055 Start Sequence Begins for Class G – City Boat Club One-Designs – One Gun

**Fleet 1 Spinnaker Classes** Starting at **GC”1”** W of Georges Island

1000 VHF Announcements **VHF 65**

1030 Repeat VHF Announcements Channel 65

1055 Classes A-C Warning Signal – One Gun

1100 Start Sequence Begins for Fleet 1 (Classes A-C) with start of 1<sup>st</sup> boat – One Gun

##### **SUNDAY SEP 27 MAKE UP RACE DAY** (if needed) Same Time Schedule as Saturday.

##### **TUESDAY SEP 29 POST RACE PARTY**

1800 The Daily Catch Restaurant

1900 Awards

#### **5. STARTING AND FINISHING**

5.1 **Two Starting Lines** SW of Georges Island

**Fleet 2** - Between GRC”HS” and “Dolly Madison” Hingham YC RC Boat to Starboard

**Fleet 1** - Between GC”1” and “MJM” RC boat to Port.

5.2 **Start Sequence** During the Start Sequence, A horn shall be sounded every 5 minutes using *GPS time* until all boats have started. The RC may use VHF to communicate with starters. Start sequence modifies RRS Rule 26.

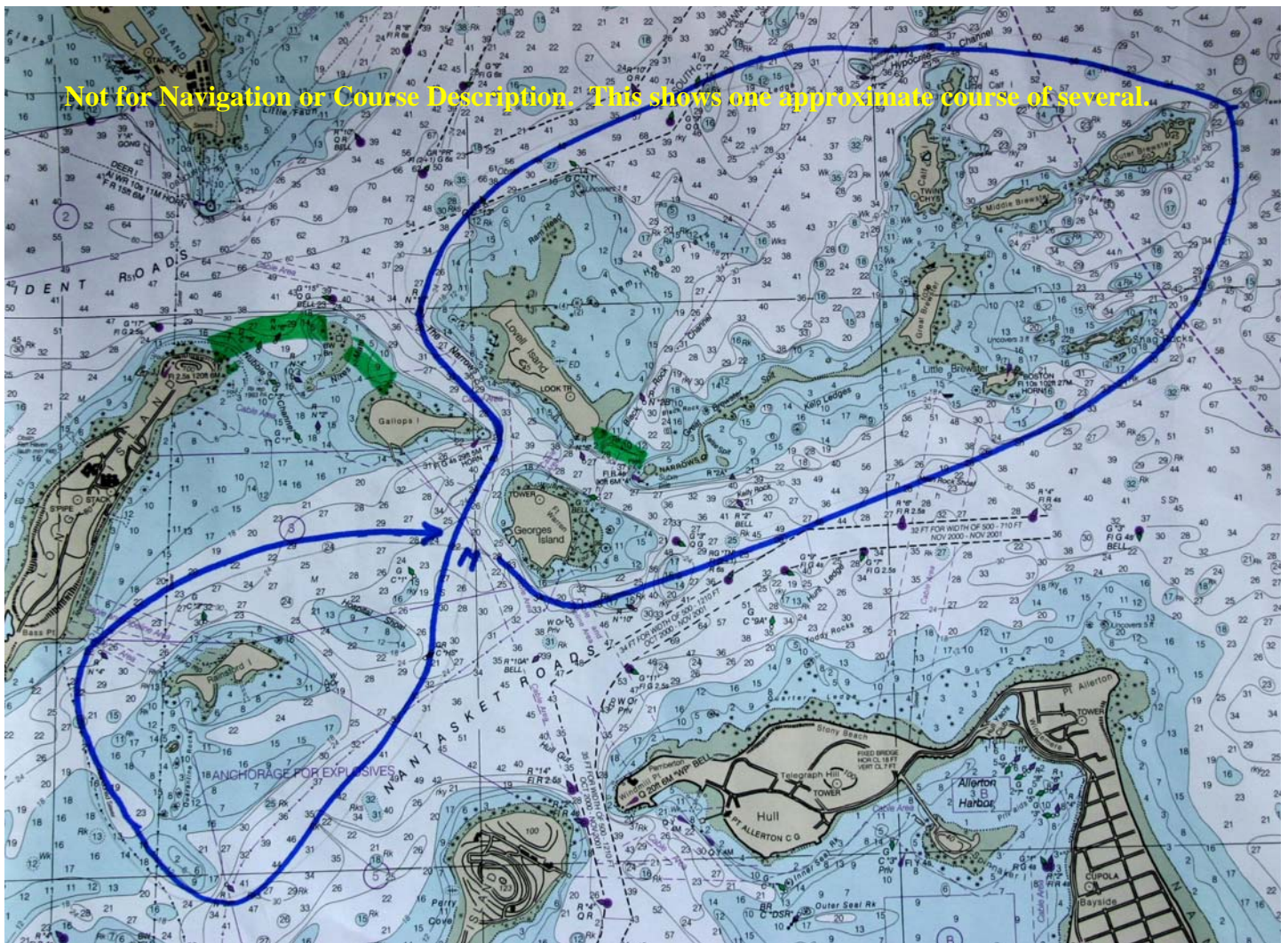
5.3 **Start Times** A Scratch Sheet with start times for each boat will be available on the website, handed out at the Captain's Meeting September 25, and from the SEATOW boat in the vicinity of the starting area.

5.4 **100 Yard Stand Off** Please keep behind the starting areas until 2 minutes prior to your start.

5.5 **Two Finishing Lines** Unless otherwise announced by VHF, there shall be two Finish Lines:

- Fleet 2 Class D-G** Between GRC"HS" SW of Georges I. to Port and RC Boat to Starboard.
- Fleet 1 Class A-C** Between GC"1" W of Georges I. to Port and RC boat to Starboard.

5.4 Contestants are asked to keep 100 yds clear of, and behind, the starting area until 2 minutes prior to their start.



## 6. THE COURSES *Total figure-eight course length is 12 miles*

### **COURSE 1** – *First Loop Clockwise, Second Loop Counter-Clockwise.*

From the Start, heading N

**Leave to Port:** Gallups Island.

**Leave to Starboard:** Lovell Isl. buoys RN”10”, GC”13” & GC”11”, Little Calf Isl and Outer Brewster Isl.

**Leave to Port:** GC”1” SW of Georges Island, RN”4” Bass Point, Long Island, Inflated Mark S of Quarantine Rocks, RN”2P” Quarantine Rocks S of Rainsford Island and Finish Buoy.

### **COURSE 1R** - *Reverse of Course 1 above with First Loop Clockwise, Second Loop Counter-Clockwise*

From the Start, heading SW

**Leave to Starboard:** RN “2P” Quarantine Rocks, Inflated Mark S of Quarantine Rocks, RN”4” Bass Point (Long Island), GC”1” SW of Georges Island.

**Leave to Port:** Outer Brewster Isl, Little Calf Isl, Lovell Isl buoys GC”11”, GC”13” and RN”10”.

**Leave to Starboard:** Gallups Isl. and Finish Buoy.

### **COURSE 2** - *First Loop Counter-clockwise, Second Loop Clockwise*

From the Start heading SE,

**Leave to Port:** Outer Brewster Isl, Little Calf Isl, and Lovell Isl. Buoys GC”11”, GC”13” and RN”10”

**Leave to Starboard:** GC”1” SW of Georges Island; RN”2P” Quarantine Rocks, Inflated Mark S of Quarantine Rocks, RN”4” SE of Bass Pt., Long Island and Finish Buoy.

### **COURSE 2R** - *Reverse of Course 2 above with First Loop Counter-Clockwise, Second Loop Clockwise*

From the Start, heading NW,

**Leave to Port:** RN”4”SE of Bass Pt., Inflated Mark S of Quarantine Rocks, RN”2P”, GC”1”, Gallups Island

**Leave to Starboard:** Lovell Isl buoys RN”10”, GC”13”, GC”11”, Little Calf Isl Outer Brewster Isl and Finish Buoy.

### **COURSE 3** - *Inside Course with two Clockwise Loops*

From the Start heading SE through Hull Gut

**Leave to Starboard:** Peddocks Isl and Harry’s Rock “Birdcage” FL4s “HR”, RN”6” S of West Head Long Isl near Bridge, GC”1” Nubble Channel E of Long Isl, R”10A” Bell S of Georges Isl; RN”2P” Quarantine Rocks, Inflated Mark S of Quarantine Rocks, RN”6” S of West Head near Bridge; GC”3” N of Rainsford Isl and Finish Buoy.

### **COURSE 4** - *Inside Figure 8 Course with First Loop Counterclockwise*

From the Start heading WNW between Rainsford Isl and Long Isl:

**Leave to Port:** GC”3” N of Rainsford Isl, RN”6” S of West Head Long Isl near Bridge; Inflated Mark S of Quarantine Rocks, RN”2P” Quarantine Rocks.

**Leave to Starboard:** R”10A” Bell S of Georges I; Peddocks Isl and Harry’s Rock “Birdcage” FL4s “HR”, RN”6” S of West Head Long Isl near Bridge; GC”1” Nubble Channel E of Long I and Finish Buoy

## 7. GOVERNMENT MARKS & RESTRICTED AREAS

7.1 Boats shall not pass between (a) any of the Brewster and Calf chain of islands, nor (b) between Lovell Island and Great Brewster Spit (through Black Rock Channel) nor (c) between Gallops and Long Island or (d) between Rainsford Island and RN2P to the South marking the Quarantine Rocks\*.

7.2 When not used as marks of the course, Government marks may be disregarded at your own risk.

## 8. SHORTENING COURSE AFTER THE START & TIME LIMIT

8.1 The Race Committee may shorten the race for either Fleet, to finish at GC1 (Fleet 1) and/or GRC “HS” (Fleet 2) SW of Georges Island after the first loop or at any other turning mark of the Course by displaying a code flag “S” and making a sound signal and announcing the Fleet (1 and/or 2) race to be shortened prior to the first boat rounding that mark ... in which case the finish line shall be between the RC Boat and nearby mark of the Course.

8.2 There will be no adjusted finish time for a shortened course because PHRF-NE derived Time-on-Time intervals for a slow race of 2.5-3 hours (of any length) are virtually identical to the standard PHRF Time-on-Distance intervals used to establish (assuming normal sailing conditions) the starting sequence in a 12 mile pursuit race.

8.3 **Time Limit:** Any yachts not having finished by 1600 hrs. shall be declared DNF (“did not finish”) and shall be awarded one (1) place higher than the number of finishers within the time limit.

## 9. RECORDING FINISH TIME

All contestants are asked to record (a) their Finish Time, preferably GPS or Cell Phone time, and (b) the name, bow and sail number of the boat finishing immediately in front and immediately behind. Frequently there are so many boats finishing at the same time, the RC may need this info to assist in resolving order of finish.

## 10. PENALTY TURNS, PROTESTS & ARBITRATION

10.1 **Courtesy & Instruction First** Approximately 30% of participating yachts don’t normally race and probably more than 50% are unfamiliar with the latest 2009 Racing Rules. Courtesy and Instruction shall be the by-words on the race course, not aggressive application of the Rules. If you know more about the Rules, help the others to learn but don’t press home the point.

10.2 **One Turn Penalty** The penalty for infringing a rule of Part 2 (When Boats Meet) shall be one 360 degree turn with at least one tack and one jibe. This modifies Part 4, Paragraph 44.2 of the RRS. For those of you who haven’t read Part 2 lately, it’s a short 6 pages of the 153 page rule book. Part 2 maybe read/downloaded from the web at [http://sailing.org/tools/documents/RRS200912IntroParts1to7-\[6976\].pdf](http://sailing.org/tools/documents/RRS200912IntroParts1to7-[6976].pdf) pages 9-14.

10.3 **Protest Fee** Upon finishing, skippers wishing to lodge a protest involving an alleged breach of the rules of Part 2 of the RRS shall inform the RC Boat. Immediately thereafter, the protesting boat shall hand the designated launch or RC Boat \$200 cash in return for a Protest Form. This amount shall be a tax deductible donation to the Island Alliance. Within 30 minutes of finishing a short arbitration hearing will be held by judges appointed by the Regatta Director, who may resolve the protest by assignment of scoring penalties depending on the severity of the infringement. Their decision shall be final. This modifies Part 5 Section B of the RRS.

## 11. RESPONSIBILITY

11.1 The safety of a boat and its crew is the sole and inescapable responsibility of the Skipper who must ensure that the boat is fully sound, thoroughly seaworthy and manned by an experienced and physically capable crew. Neither the establishment of regulations or acceptance of a boat to race in this event shall in any way limit or reduce the complete and unlimited responsibility of the Skipper.

11.2 It is the sole and inescapable responsibility of the Skipper of each boat to decide whether or not to start or continue in the race.

11.3 The Island Alliance and any sponsors or staff assisting with this event do not accept responsibility for loss of life or injury to participants or others, or for the loss or damage to any vessel in any way or from any cause during or related to this event. The captains of each competing vessel shall sign a waiver to this effect on the application form.

11.4 The Skipper/Owner shall be responsible for the actions of his or her crew and guests. The legal drinking age in Massachusetts is 21. Minors will not be served and proof of age will be required. In the event of a serious breach of conduct, sportsmanship, destruction of property, under- age drinking, or failure to comply with the request of any Race Officer, Committee Member or agent of race week, the Skipper/Owner will be held responsible and the boat or competitor may be subject to expulsion from the regatta by the Event Director.

## **12. PRIZES** (Shown are 2008 Trophies planned for 2009, though Sponsors Names may Change)

EOEA Secretary's Yacht Club Challenge Trophy -- Best 3 Finishers from same YC in Class A-C, D-F

The Mayor's Trophy -- 1st Overall -- Greatest Margin of Victory in Fleet 1 or 2 or Class G

Beal Consulting Group Trophies

1st Overall -- Fleet 1 Spinnaker (Class A-C)

1st Overall -- Fleet 2 Non-Spinnaker (Class D-F)

Senator Edward M. Kennedy Trophy -- 1st Class A (2nd & 3rd Place Glasses)

Equity Office Properties Bowl -- 1st Class B (2nd & 3rd Place Glasses)

Barbara Lee Family Foundation Bowl -- 1st Class C (2nd & 3rd Place Glasses)

Capt. Pratt Trophy -- 1st Class D (2nd & 3rd Place Glasses)

The Winthrop & McCance Trophy -- 1st Class E (2nd & 3rd Place Glasses)

Dr. R. K. Sharma Trophy -- 1st Class F (2nd & 3rd Place Glasses)

National Park Service Cup -- 1st Class G (2nd & 3rd Place Glasses)

The Burnes Family Bowl -- Best Placing Classic Yacht Either Fleet (Pre-1958)

The Daily Catch Cup -- 1st Female Skipper -- Fleet 1

The Davis Family Bowl -- 1st Female Skipper -- Fleet 2

Windward Investment Trophy -- 1st Master -- Fleet 1 (65 yrs. or older)

The Fallon Cup -- 1st Master -- Fleet 2 (65 yrs. or older)

The J Boats Trophy -- Top Placing J Boat in either Fleet

One Design Class Trophies -- Awarded if 3 or more of any Class.

The Harold & Evelyn Gross Trophy -- Top Placing All Family Crew in Either Fleet

The Presidents Bowl -- Top Community Sailing Program (Top Placing 3 Boats either Fleet)

## **12. AMENDMENTS TO THIS NOTICE**

The BHIR Committee reserves the right to amend this notice. Any amendments to this Notice of Race and other Notices made prior to noon on Friday, September 25 will be emailed to participants, incorporated in the Sailing Instructions distributed at the Captain's Meeting on September 25 and by Race Committee Boats prior to the Start on Saturday, September 26.